

Regulators & Filters

Regulators

with wall screw clamp, pressure adjusting range 0 -12 bar, blue colour, with pressure gauge thread



Art. No.	thread (inch)
AT-R18	1/8"
AT-R14	1/4"
AT-R12	3/8"-1/2"
AT-R34	3/4"
AT-R1	1"

Filter Regulators

with wall screw clamp, blue colour, with pressure gauge thread

A) pressure adjusting range 0-12 bar
with transparent cup

B) pressure adjusting range 0-18 bar
with metal cup



Art. No.	thread (inch)
AT-FR18	1/8"
AT-FR14	1/4"
AT-FR12	3/8"-1/2"

Art. No.	thread (inch)
AT-FRM18	1/8"
AT-FRM14	1/4"
AT-FRM12	3/8"-1/2"
AT-FRM34	3/4"
AT-FRM1	1"

Lubricators

suitable for filtered air, with wall screw clamp, blue colour

A) 12 bar with transparent cup **B)** 18 bar with metal cup



Art. No.	thread (inch)
AT-L18	1/8"
AT-L14	1/4"
AT-L12	3/8"-1/2"

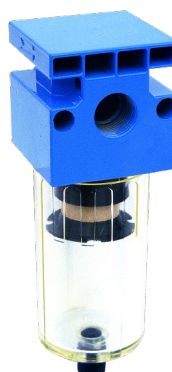
Art. No.	thread (inch)
AT-LM18	1/8"
AT-LM14	1/4"
AT-LM12	3/8"-1/2"
AT-LM34	3/4"
AT-LM1	1"

Filters

with wall screw clamp, blue colour

A) pressure adjusting range 0-12 bar
with transparent cup

B) pressure adjusting range 0-18 bar
with metal cup



Art. No.	thread (inch)
AT-F18	1/8"
AT-F14	1/4"
AT-F12	3/8"-1/2"

Art. No.	thread (inch)
AT-FM18	1/8"
AT-FM14	1/4"
AT-FM12	3/8"-1/2"
AT-FM34	3/4"
AT-FM1	1"

Regulators & Filters & Car Washing Guns



Filter Regulators + Lubricators

with wall screw clamp, blue colour

A) pressure adjusting
range 0-12 bar

with transparent cup



B) pressure adjusting
range 0-18 bar

with metal cup



Filters + Regulators + Lubricators

with wall screw clamp, blue colour

A) pressure adjusting
range 0-12 bar

with transparent cup



B) pressure adjusting
range 0-18 bar

with metal cup



Art. No.	thread
AT-FR+L18	1/8"
AT-FR+L14	1/4"
AT-FR+L12	3/8"-1/2"

Art. No.	thread (inch)
AT-FR+LM18	1/8"
AT-FR+LM14	1/4"
AT-FR+LM12	3/8"-1/2"
AT-FR+LM34	3/4"
AT-FR+LM1	1"

Art. No.	thread (inch)
AT-F+R+L18	1/8"
AT-F+R+L14	1/4"
AT-F+R+L12	3/8"-1/2"

Art. No.	thread (inch)
AT-F+R+LM18	1/8"
AT-F+R+LM14	1/4"
AT-F+R+LM12	3/8"-1/2"
AT-F+R+LM34	3/4"
AT-F+R+LM1	1"

Pressure Filter Regulators

with lower connection (inf.) or rear connection (post.)
two adjustable air outlets with gauge Ø 50 mm
aluminium body



Art. No. bayonet coupler	Art. No. universal coupler	connection (inch)
R10-INF.3/8"	R10UNI-INF.3/8"	lower conn. 3/8"
R14-INF.1/2"	R14UNI-INF.1/2"	lower conn. 1/2"
R10-POST.1/4"	R10UNI-POST.1/4"	rear conn. 1/4"
R14-POST.3/8"	R14UNI-POST.3/8"	rear conn. 3/8"

Car Washing Guns

made of brass - connection to
1/2" hose, max. 40 bar - +90°C
possible version:

1 mounted nozzle
and 1 spare nozzle



Art. No.	fitted nozzle	spare nozzle
160.04/2+4	2 mm	4 mm
160.04/2	2 mm	2 mm
160.04/3	3 mm	3 mm
160.04/4	4 mm	4 mm
160.007	2 mm	w.o. nozzle
160.009	4 mm	w.o. nozzle
160.00	w.o. nozzle	w.o. socket

Paint Spray & Washing Guns

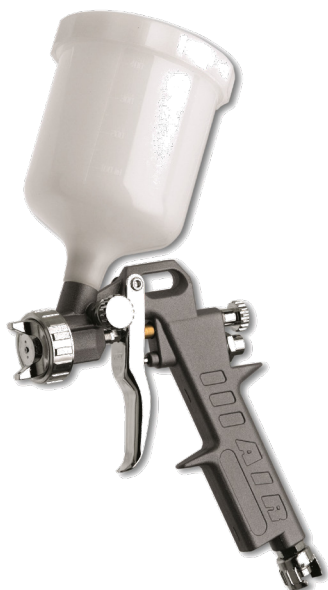


Paint Spray Guns

packing in coloured single display box

with gravity cup
tank capacity 500 ccm
nylon cover, needle 1.5 mm
operating pressure 4-8 bar

Art. No. **162A**



with suction cup
tank capacity 1000 ccm
aluminium cover, needle 1.5 mm
operating pressure 4-8 bar

Art. No. **162C**



with suction cup
tank capacity 1000 ccm
PVC cover, needle 1.5 mm
operating pressure 4-8 bar

Art. No. **701420**



Paint Spray Guns

packing in coloured single display box
with suction cup - tank capacity 1000 ccm
with bayonet closing, aluminium cover,
needle 1.5 mm
operating pressure 4-8 bar

Art. No. **162DS**



Washing Guns

packing: 2 pcs/carton

GR 1000-tank and cover
made from aluminium

Art. No. **61A**



GR 1000-M30
red steel tank

Art. No. **61B**



connection possible with DIN 7,2
connector or bayonet coupling 1/4"



Blow Guns & Tyre Inflating Guns



Blow Off Guns - Aluminium

in bulk packing
air flow 6 bar

Art. No.: **60A**



Blow Off Guns - Aluminium

in bulk packing
air flow 6 bar
with long tube

Art. No.: **60B**



Tyre Inflating Guns

manometer with pressure gauge Ø 63 mm
(marked with „Made in Italy“),
max. pressure 12 bar

Art. No. **60D** 40 cm pipe



Digital Tyre Pressure Gauges

manometer Ø 63 mm
(marked with „Made in Italy“),
max. pressure 12 bar

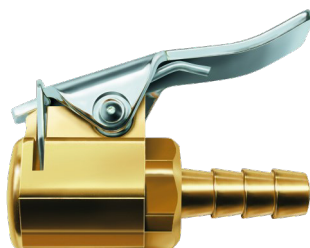
Art. No. **60DD** 50 cm pipe



Universal Head - Brass

clip-on connectors

Art. No.	Ø (mm)	for hose in. Ø
60E/06	6	5 mm
60E/08	8	7 mm



Tyre Control Pressure Gauge

with pressure gauge Ø 63 mm
(marked with „Made in Italy“),
0-12 bar, with 40 cm tube with
chuck for direct attachment to
the valve

Art. No. **60F**



Clip-on ball Foot Air Chucks

self-closing after detaching
from tyre valve (closed end)



Art. No.	Ø (mm)	hose Ø (mm)
14.4151	8	7
14.4171	9	8



Clip-on ball Foot Air Chucks

with female thread
self-closing after detaching
from tyre valve (closed end)



Art. No.	Ø (inch)
14.5451	1/4" - 18NPT
14.5851	1/8" - 27NPT



Service Station Tyre Inflating Chucks

Art. No.	Ø	for hose
14.6602	8	7 mm
14.6805	9	8 mm



Truck head with handgrip

Art. No.	Ø	for hose
60E2/06	6	5 mm
60E2/08	8	7 mm



Blow Guns and Quick Couplings



Blow Gun - Plastic

robust polyamide, low weight,
perfect for electronic devices,
nozzle 1,5 mm



Blow Gun - Aluminium die cast

the classic blowgun,
housing made of die-casting,
nozzle 1,5 mm



Blow Gun - forged Aluminium

forged (very robust) aluminium,
clear anodized, nozzle 1,5 mm



Art. No.	connection	nozzle
EGKBGP-S	DN 7,2	short
EGKBGP-L	DN 7,2	long

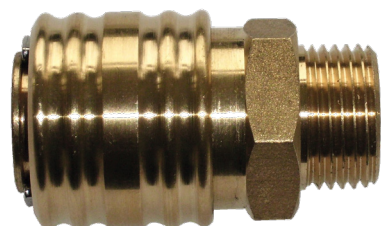
Art. No.	connection	nozzle
EGKBGD-S	DN 7,2	short
EGKBGD-L	DN 7,2	long

Art. No.	connection	nozzle
EGKBGF-S	DN 7,2	short
EGKBGF-L	DN 7,2	long

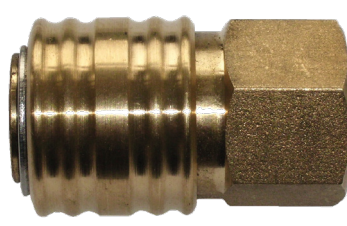
Standard Quick-Disconnect Couplings DN 7,2

universal quick-disconnect couplings made of brass blank, new stem profile for safe fit of the hose and assembly

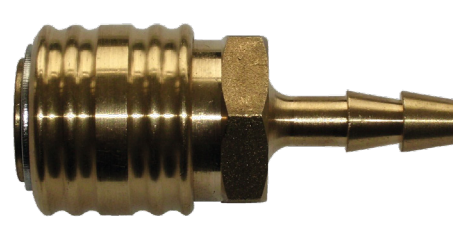
Couplings with male thread



Couplings with female thread



Couplings with hose stem



Art. No.	thread
EGKS 18 A	G 1/8"
EGKS 14 A	G 1/4"
EGKS 38 A	G 3/8"
EGKS 12 A	G 1/2"
EGKS 1415 A	M 14 x 1,5
EGKS 1615 A	M 16 x 1,5
EGKS 1815 A	M 18 x 1,5

Art. No.	thread
EGKS 18 I	G 1/8"
EGKS 14 I	G 1/4"
EGKS 38 I	G 3/8"
EGKS 12 I	G 1/2"
EGKS 1415 I	M 14 x 1,5
EGKS 1615 I	M 16 x 1,5
EGKS 1815 I	M 18 x 1,5

Art. No.	hose \varnothing (mm)
EGKS 6 T	6 mm
EGKS 8 T	8 mm
EGKS 9 T	9 mm
EGKS 10 T	10 mm
EGKS 13 T	13 mm

Quick Couplings



Standard Quick-Disconnect Couplings DN 7,2

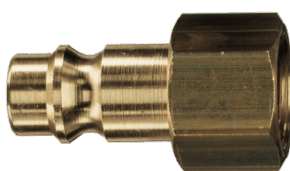
universal quick-disconnect couplings made of brass blank, new stem profile for safe fit of the hose and assembly

Plugs with male thread



Art. No.	thread
EGKS 18 NA	G 1/8"
EGKS 14 NA	G 1/4"
EGKS 38 NA	G 3/8"
EGKS 12 NA	G 1/2"

Plugs with female thread



Art. No.	thread
EGKS 18 NI	G 1/8"
EGKS 14 NI	G 1/4"
EGKS 38 NI	G 3/8"
EGKS 12 NI	G 1/2"

Plugs with hose stem



Art. No.	thread
EGKS 6 S	6 mm
EGKS 8 S	8 mm
EGKS 9 S	9 mm
EGKS 10 S	10 mm
EGKS 13 S	13 mm

Distributors for Quick-Disconnect Couplings DN 7,2

assembled of brass MS 58, for compressed air distribution on central places

3-Way-Distributors



Art. No.	inlet G female (inch)
EGKTW 38 ES	G 3/8"
EGKTW 12 ES	G 1/2"

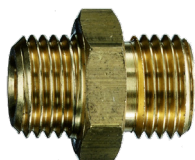
4-Way-Distributors



Art. No.	inlet G female (inch)
EGKFW 38 ES	G 3/8"
EGKFW 12 ES	G 1/2"

Pneumatic Double Nipples

with male thread



Art. No.	thread G (inch)
185.029	1/8"-1/8"
185.030	1/8"-1/4"
185.033	1/4"-1/4"
185.053	1/4"-3/8"
185.054	1/4"-1/2"
185.055	3/8"-3/8"
185.075	3/8"-1/2"
185.077	1/2"-1/2"
185.078	1/2"-3/4"
185.013	3/4"-3/4"
185.015	3/4"-1"
185.014	1"-1"
280-228	1 1/2"-1 1/2"
454-9	2"-2"

Pneumatic Reducing Nipples

with female thread, male thread and hexagon



Art. No.	female - male thread G (inch)
1117	1/4"-1/8"
322-18	3/8"-1/8"
1068	3/8"-1/4"
1191	1/2"-1/4"
1018	1/2"-3/8"
1292	3/4"-1/2"
1193	1"-3/4"
409-81	1 1/2"-3/4"
417-50	2"- 1 1/4"
417-45	2"-1 1/2"

Quick Couplings



Pneumatic-Connectors DIN 3852-2

made of brass, with male
thread parallel and inner cone 45°



Art. No.	thread G (inch)	length (mm)	hose ø (mm)
113-51	1/8"	37	6
113-52	1/8"	37	9
113-31a	1/4"	40	6
113-40a	1/4"	40	9
113-71	1/4"	45	13
113-32a	3/8"	43	6
113-34a	3/8"	43	9
113-43	3/8"	48	13
113-67	1/2"	44	6
113-66	1/2"	44	9
113-44	1/2"	49	13
113-25	3/4"	49	9
113-26	3/4"	54	13
113-27	3/4"	58	19
113-28	1"	60	19
113-29	1"	66	25

Hose Stem for Hexagon Nuts with ball seal

made of brass



Art. No.	thread G (inch)	length (mm)	hose ø (mm)
295-5	1/8"	25	4
295-6	1/8"	25	6
113-49	1/4"	34,5	4
106-16	1/4"	37	6
113-50	1/4"	37	9
120-10a	3/8"	47,5	4
113-38	3/8"	39	6
113-39	3/8"	39	9
113-47	1/2"	41	6
113-48	1/2"	41	9
113-45	1/2"	54	13

Pneumatic-Connectors

made of brass

Hexagon Nuts



Pneumatic Hose Connectors DIN 8542

made of brass



Art. No.	hose ø (mm) 1	hose ø (mm) 2	length (mm)
113.00	4	4	64
113.01	6	6	72
113.02	6	8	72
113.03	9	9	72
113.04	13	13	72

Art. No.	thread G (inch)	SW
295-7	1/8"	12
124-19	1/4"	17
120-9	3/8"	19
124-18	3/8" LH	19
147-12	1/2"	24

Quick Couplings



Hose Clamps DIN 20039 A

robust clamps of malleable iron,
zinc plated and yellow passivated
with two parts with loose saddles



Art. No.	for hose \varnothing (inch = mm)	hose outer range
SL 29	1/2" = 13 mm	22-29
SL 30	3/4" = 19 mm	28-34
SL 31	1" = 25 mm	32-40
SL 32	1.1/4" = 32 mm	39-49
SL 33	1.1/2" = 38 mm	48-60
SL 34	2" = 50 mm	56-72
SL 35	2.1/2" = 63 mm	77-94
SL 36	3" = 75 mm	89-101
SL 37	3" = 75 mm	94-115
SL 38	3.1/2" = 89 mm	113-127
SL 39	3.1/2" = 89 mm	115-145
SL 40	4" = 100 mm	127-140
SL 41	4" = 100 mm	135-155
SL 42	5" = 125 mm	155-175
SL 43	6" = 150 mm	175-195
SL 44	7" = 175 mm	210-225
SL 45	8" = 200 mm	227-250

Claw Couplings

robust couplings of malleable iron,
zinc plated and yellow passivated

Hose (formerly DIN 3483)



Art. No.	for hose \varnothing (inch = mm)
SKG 6	1/4" = 6 mm
SKG 10	3/8" = 10 mm
SKG 13	1/2" = 13 mm
SKG 15	5/8" = 15 mm
SKG 19	3/4" = 19 mm
SKG 25	1" = 25 mm
SKG 32	1.1/4" = 32 mm

Female (formerly DIN 3482)

Art. No.	thread G (inch)
KIG 14	1/4"
KIG 38	3/8"
KIG 12	1/2"
KIG 34	3/4"
KIG 10	1"
KIG 54	1.1/4"



Original Rubber Ring

made of perbunan, oil resistant



Art. No 516-6

Male (formerly DIN 3481)

Art. No.	thread G (inch)
KAG 14	1/4"
KAG 38	3/8"
KAG 12	1/2"
KAG 34	3/4"
KAG 10	1"
KAG 54	1.1/4"



Water & Air Hose Reels

Water Hose Reels WS 32

light, practical and mobile water hose extension,
special hose with textile inlay and spiral wound cross-weave,
with a spraying nozzle with waterstop and a top connector,
drum made of special highly breakproof plastic, strong
carrying frame made of galvanized tubular steel
hose length 20m, Ø 1/2"

Art. No. **1237120**



Compressor Hose Reels

with high-quality fabric hose, oil-resistant, up to 15 bar
of pressure, complete with quick release couplings,
drum made of special highly breakproof plastic

A) standard

Art. No. **1127020**

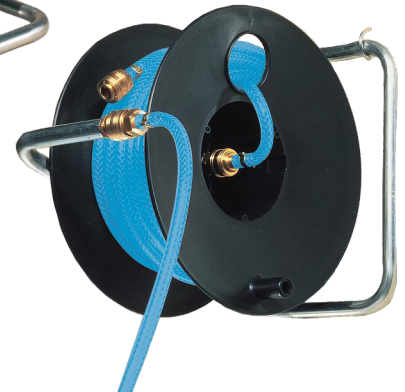
frame made of steel tubing with bright galvanized
zinc coating, hose length 20m, Ø 6 x 12 mm



B) anti twist

Art. No. **1127030**

with axial connection permitting rolling up or out during
operation, throughflow system, with connection hose,
suitable for wall mounting, frame made of steel tubing with
bright galvanized zinc coating, hose length 20m, Ø 9 x 15 mm



Automatik-Box Air ABA 10 D

- 10 m + 2 m highly flexible hose made of polyurethan,
suitable for air or cold water
- hose Ø 8/12 mm for max. working pressure 12 bar
- with comfortable automatic reeling with ratchet hose
release
- 1/4" connections

Art. No. **1240320300**

